



# District® Perfect Tri® French Terry Full-Zip Hoodie. DT356



A hoodie that is perfect for layering all year round.

- 8.25-ounce, 61/31/8 ring spun combed cotton/poly/rayon
- Tear-away label
- Unlined hood
- Natural drawcords, back neck tape and zipper tape
- YKK zipper
- 1x1 rib knit hem and cuffs

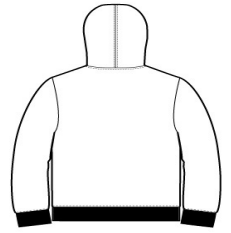
\*\*

### CARE INSTRUCTIONS

Machine wash cold with like colors, only non-chlorine bleach when needed, tumble dry low, warm iron if necessary.



front



back

### HOW TO MEASURE







#### CHEST

With arms down at sides, measure around the upper body, under arms and over the fullest part of the chest.

### SIZE CHART

	XS	S	M	L	XL	2XL	3XL	4XL
Chest	32-34	35-37	38-40	41-43	44-46	47-49	50-53	54-57

### COLOR INFORMATION

			
Black PMS NTR BLACK C	Grey Frost PMS COOL GRAY 10C	Maritime Frost PMS NO MATCH	New Navy PMS 533C